

Safety Insulin Syringe (Sheath-Lock)

Product Advantages:

- Safety:
 - * Click sound for safety activation and secure lock;
 - * The innovative engineered safety mechanism to reduce the potential risks of needle-stick injuries.
- Comfortable:
 - * Quality design for dosing precision;
 - * Elegant design cap for easier handling.
- Convenient
 - * One-handed operation;
 - * One-step activation for convenient operation.
- Low residue, low waste.

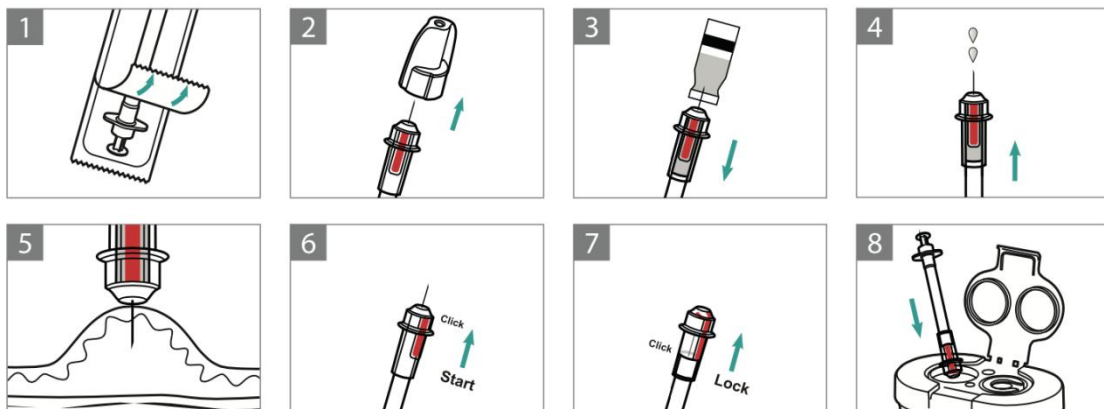


Safety Secure:

- After injection, slide the safety sheath over the needle by thumb, until a click is heard;
- The needle will be permanently locked in the shield;
- One handed, one step, permanent lock
 - Triple secure to decrease the risks of needle-stick injuries.



Instruction of Use:



Product Specification

Insulin Syringe	Catalog	Needle Size	Syringe size	Package pcs/box	CE Marked
U-40	MIS-032912-40	29G x 1/2"(12mm)	0.3ml	100	✓
	MIS-033008-40	30G x 5/16"(8mm)	0.3ml	100	✓
	MIS-033106-40	31G x 1/4"(6mm)	0.3ml	100	✓
	MIS-033108-40	31G x 5/16"(8mm)	0.3ml	100	✓
	MIS-052912-40	29G x 1/2"(12mm)	0.5ml	100	✓
	MIS-053008-40	30G x 5/16"(8mm)	0.5ml	100	✓
	MIS-053106-40	31G x 1/4"(6mm)	0.5ml	100	✓
	MIS-053108-40	31G x 5/16"(8mm)	0.5ml	100	✓
	MIS-102912-40	29G x 1/2"(12mm)	1ml	100	✓
	MIS-103008-40	30G x 5/16"(8mm)	1ml	100	✓
	MIS-103106-40	31G x 1/4"(6mm)	1ml	100	✓
	MIS-103108-40	31G x 5/16"(8mm)	1ml	100	✓
U-100	MIS-032912-100	29G x 1/2"(12mm)	0.3ml	100	✓
	MIS-033008-100	30G x 5/16"(8mm)	0.3ml	100	✓
	MIS-033106-100	31G x 1/4"(6mm)	0.3ml	100	✓
	MIS-033108-100	31G x 5/16"(8mm)	0.3ml	100	✓
	MIS-052912-100	29G x 1/2"(12mm)	0.5ml	100	✓
	MIS-053008-100	30G x 5/16"(8mm)	0.5ml	100	✓
	MIS-053106-100	31G x 1/4"(6mm)	0.5ml	100	✓
	MIS-053108-100	31G x 5/16"(8mm)	0.5ml	100	✓
	MIS-102912-100	29G x 1/2"(12mm)	1ml	100	✓
	MIS-103008-100	30G x 5/16"(8mm)	1ml	100	✓
	MIS-103106-100	31G x 1/4"(6mm)	1ml	100	✓
	MIS-103108-100	31G x 5/16"(8mm)	1ml	100	✓